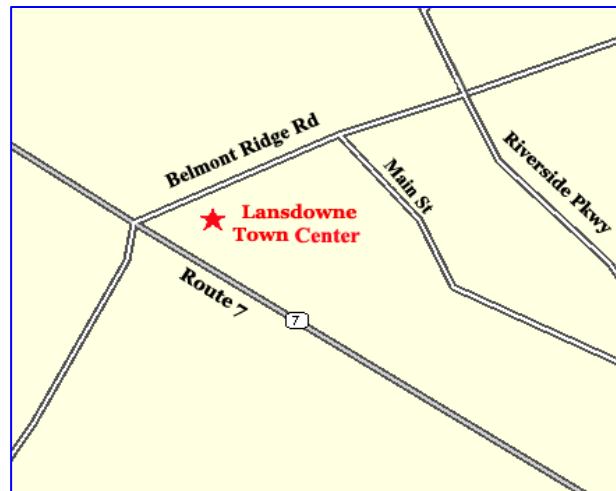


**Lansdowne Town Center  
LIVE/WORK  
RETAIL Space FOR SALE**



**BUILDING V – 19366 to 19386 Diamond Lake Drive**



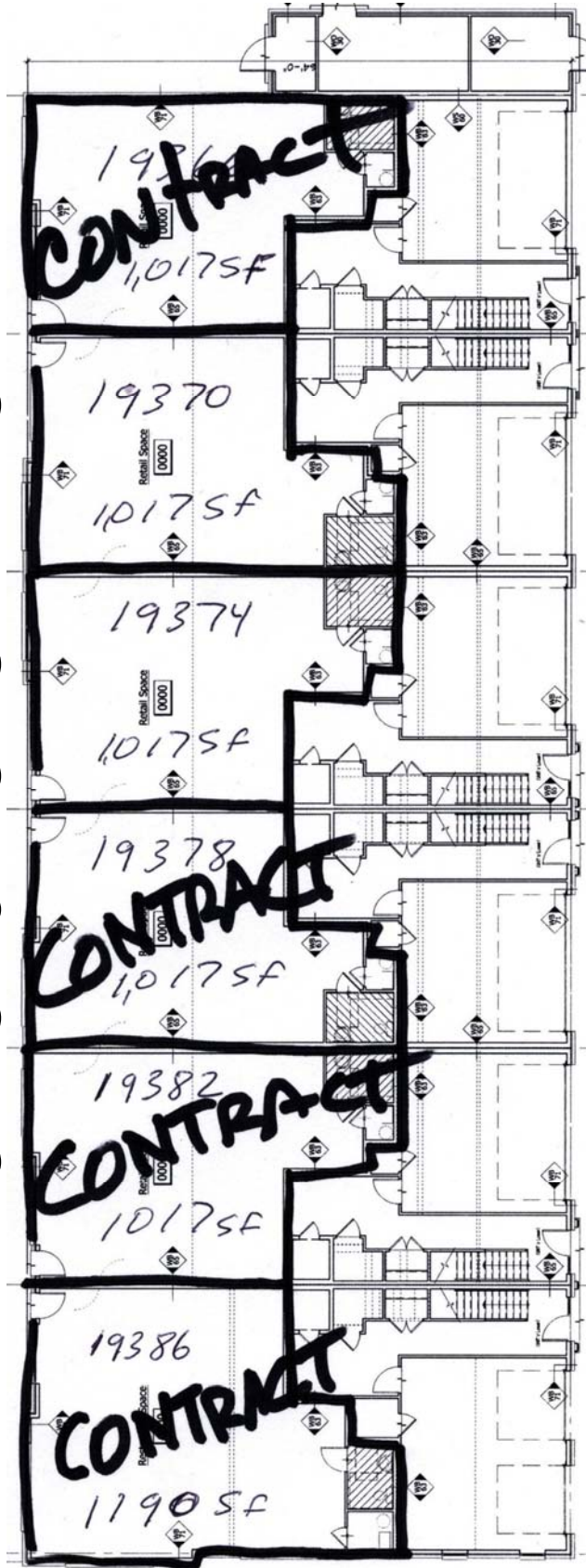
- PROJECTED DELIVERY DATE:** Summer 2011
- AVAILABLE SPACE:** Approximately 1,000 SF up to 6,000 SF
- “Warm Shell Delivery” - PRICED TO SELL!!!**
- Retail Signage**
- Zoned PD-TC – Uses Include:**
  - Retail
  - Restaurant
  - Food Store
  - Office
  - Yoga/Dance/Fitness/Martial Arts
  - Gallery
- Just steps from Harris Teeter, Starbucks, and other town center favorites & amenities**

For more information contact:

**Scott Gustavson**  
703-777-8364  
Scott@windwardnova.com

15 N King Street  
Leesburg, VA 20176  
P: 703.777.8364  
F: 703.771.8735  
www.windwardnova.com

Diamond Lake Drive



Building "V"

For more information contact:

Scott Gustavson  
703-777-8364  
Scott@windwardnova.com

15 N King Street  
Leesburg, VA 20176  
P: 703.777.8364  
F: 703.771.8735

www.windwardnova.com